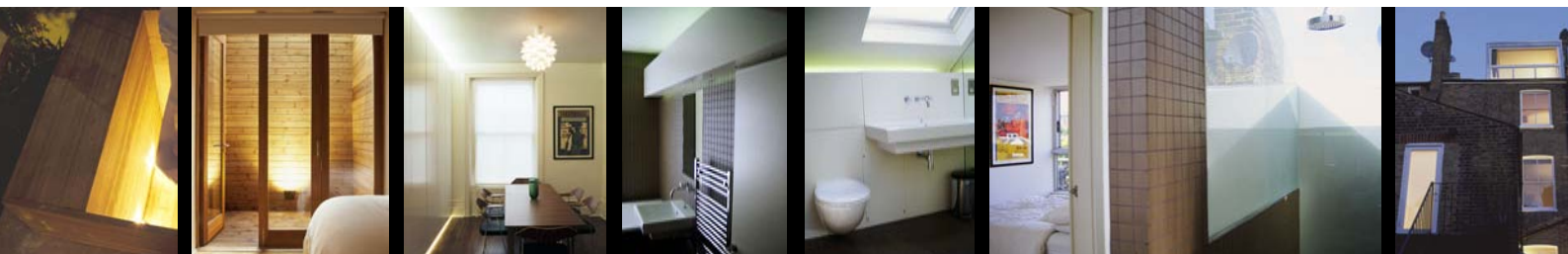
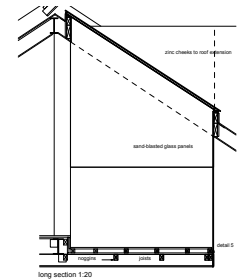
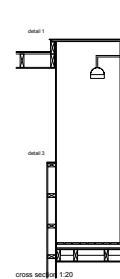
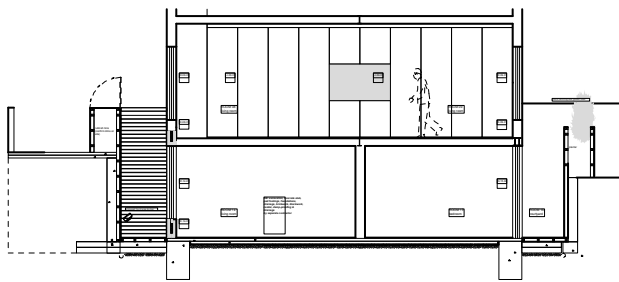
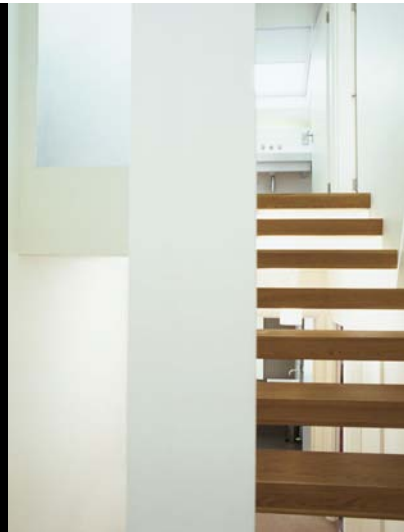
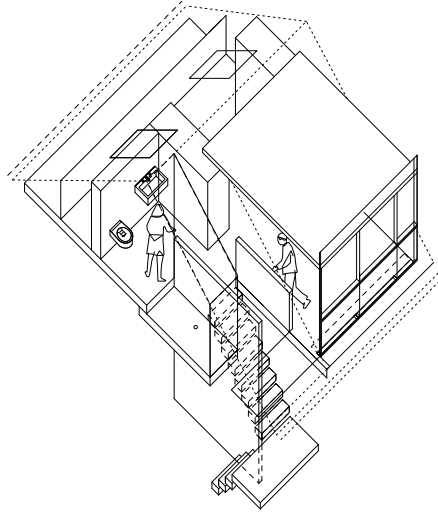
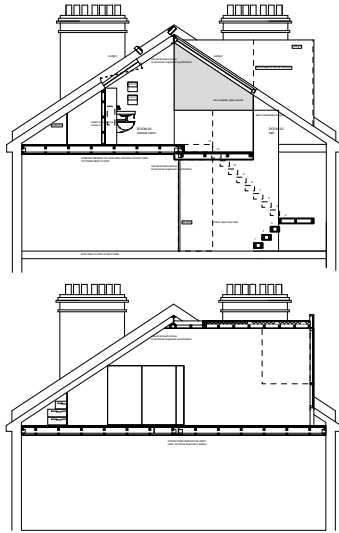
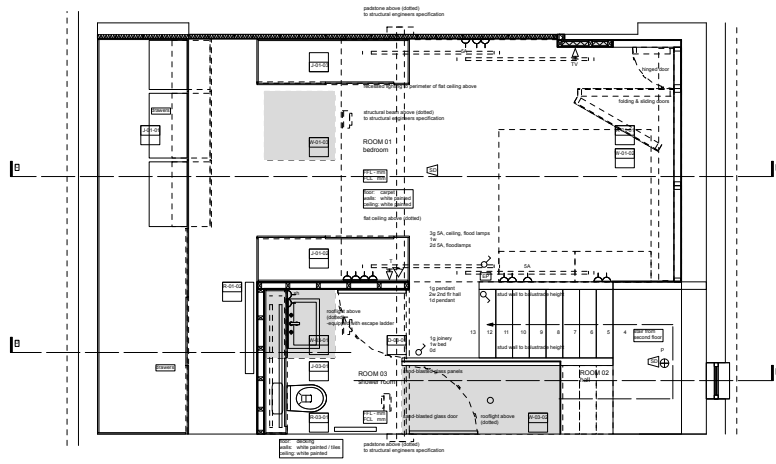


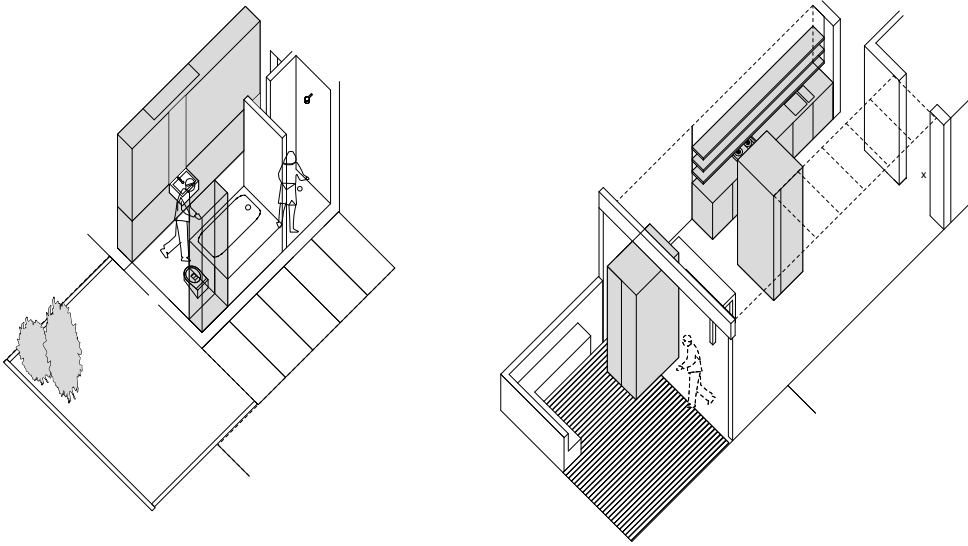
One up, One Down

The project encompasses the addition of a lower ground floor and loft level to a Victorian terrace house. The interventions to the levels between the new portions of the house are treated as fragments of a notional whole project of which the two additions are the primary components.

The particularities of English housing stock and planning legislation mean that the bedroom roof extension is a ubiquitous form of architectural intervention and in this project the space assumes the spatial character of a tree house or survey tower. The defensive character of the resulting architecture responds to traditional notions of the bedroom, while the opportunity for voyeurism evokes the fantasy of dreaming.

The shower room design resists the widespread tendency for residential bathrooms to emulate a hotel ensuite. Instead, the incorporation of roof glazing and extensive outward views, together with the use of timber decking, establishes a strong connection with the domestic realm.

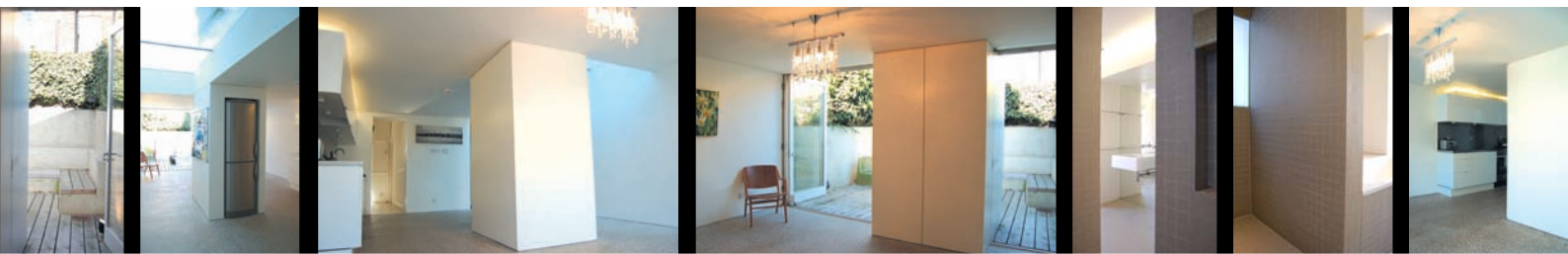
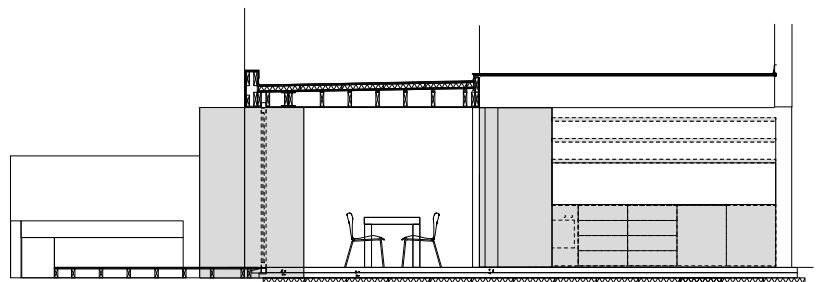
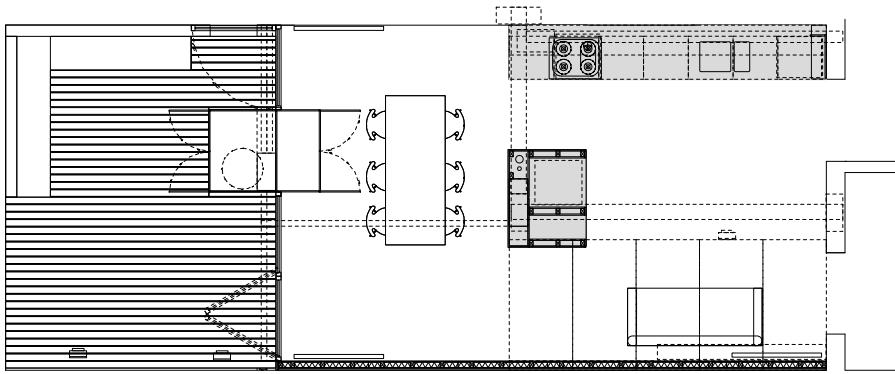


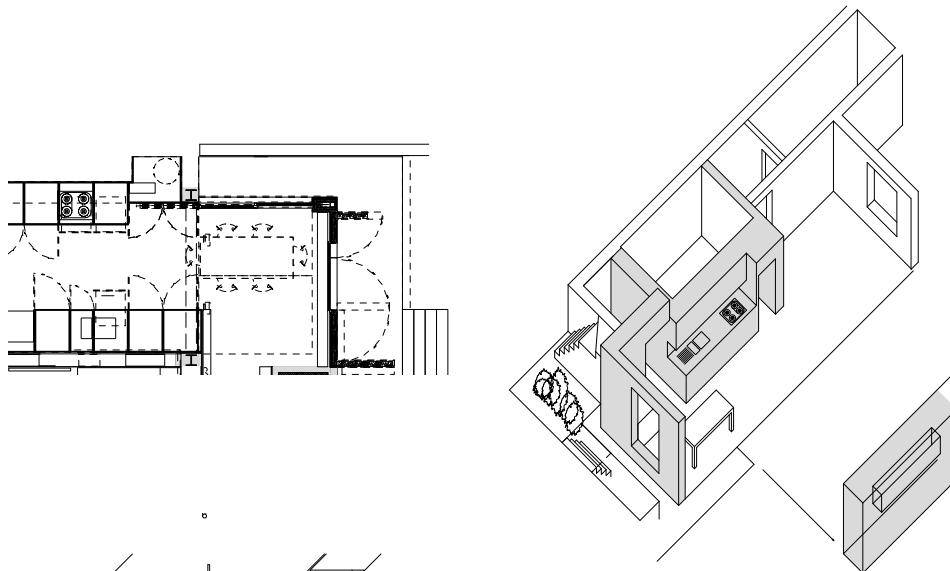


diorama

Two massive and planar volumes loosely divide the open plan space into kitchen, living and dining areas. These volumes conceal structural elements, and provide storage space, and lend a plastic quality to the ceiling the roof and ceiling that sits above them. This is reinforced by the matching rectilinear geometry of the rooftop opening, which gives the ceiling and roof the appearance of an incised solid.

Views through the spaces to a small courtyard are carefully controlled to provide only glimpses and allow partial comprehension. This visual choreography creates an impression of a larger, more complex space. The courtyard is treated as an external room, and this is reinforced by the equivalent sizing of the internal spaces. Furthermore, the concrete internal floor finish has perhaps greater external connotations than the timber that lines the courtyard at the same level as the interior. The bathroom continues the geometry of the extension.



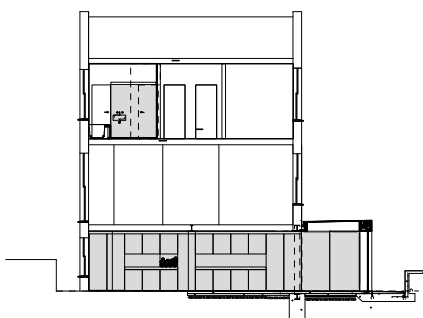
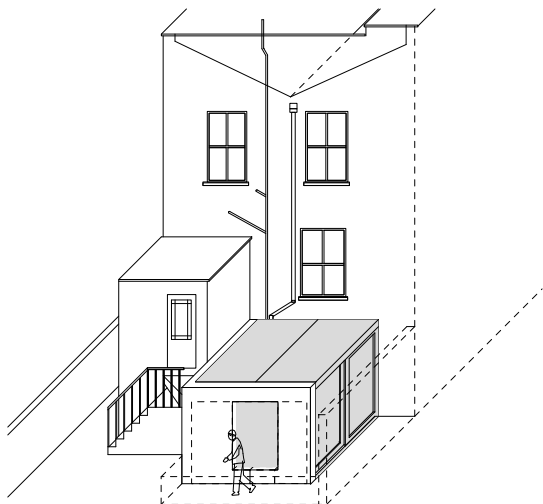


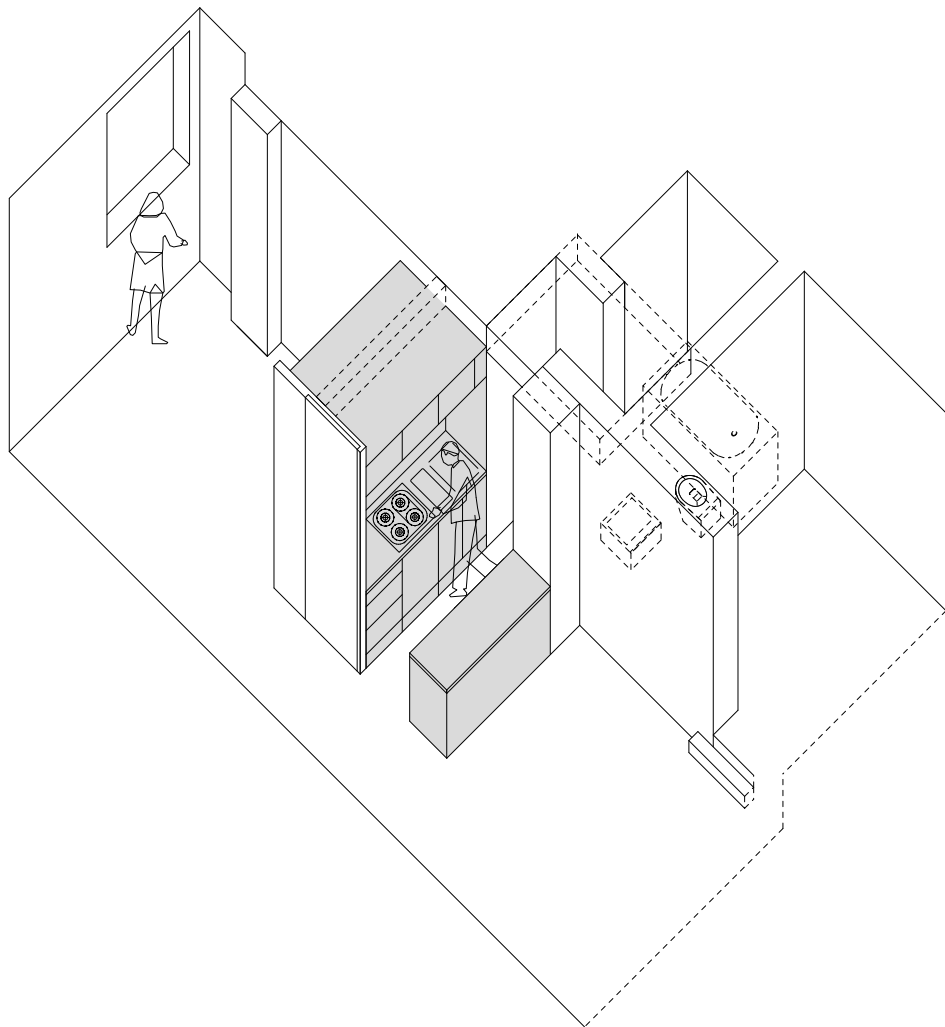
Victorian hoarding

The ground floor of this Victorian house is rearranged into an open-plan kitchen, living and dining space through a small rear addition and incisive internal alterations.

Listed Building consent was obtained for an extension that references the form and materials of Victorian houses. The flat roof and white render make reference to the adjacent existing volume, and the scale and proportion of the rear window are drawn from the existing windows above. Similarly, the slate floor is a displaced reference to the roof of the main house.

The design exploits the space between the consent drawings to create an unexpectedly modern design. Recalling a site hoarding, the solid walls that frame the new rear window are hinged panels that allow a panoptic view of the garden when opened. The obscured side elevation is composed entirely of glazed sliding doors, and the 'fifth elevation' - the roof - is entirely glazed.





karntner house

A modern central volume containing the kitchen and wardrobes is located in the middle of an open-plan space, which is treated as an historical found object.

Doors separating the bedroom, fire lobby and kitchen are concealed to heighten the sense of a single open space. This impression is reinforced by mirrors above the kitchen and wardrobe volume, which reflect the adjacent ceiling and structure. Three ceiling levels and two floor levels define the separate zones of the open plan space and reinforce the distinct character of each.

The original Edwardian windows, floorboards, chimneys, columns and beams are retained but re-presented as preserved relics.

White dye and oil to the floorboards captures the appearance of the raw sanded timber. The white lacquer finish of the kitchen and wardrobe volume gives the impression of a single massive and planar solid, which reveals its stainless steel core when incised to form work-surfaces and handles.

