

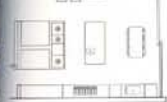
From the top

From student digs to stunning five-storey home, this elegant Edwardian property is the reward for eight years' hard graft

Report and styling: Alison Nash. Photography: David Sell



Above: In summer months the dining table and chairs can be moved outside via the large sliding glass doors for indoor-outdoor living. Right: Additional cupboard space, appliances and gadgets are conveniently concealed behind full-height sliding doors. Below: The centrally positioned pod means the kitchen can be accessed from both the hallway and the sitting room and effectively divides this open space without creating a barrier. Opposite page, top: Using the same Petra Dek Caribou floor tiles for the patio fuses the two spaces to give a sense of one 'room'. Bottom left: The island's preparation sink has an extendable cold rinse tap and a Quooker boiling water tap, which eliminates the need for a kettle. However, a dedicated coffee machine was still a must in this household.



Having lived in Fulham for 11 years, Tim Raeside and his partner had always admired the style of the area's Edwardian 'lith' houses, so called for the three lion statues that adorn their roofs. The couple were determined to one day own one, "but the only way we could afford it was to find one that needed work so when we bought this house it was a bit of a wreck," Tim explains.

The property had been rented out to students and was in fairly poor condition, so the couple knew it would be a lengthy project, and in order to achieve the home they wanted within budget they would have to tackle the project one floor at a time. Two months after moving in, a particularly wet November revealed a hole in the roof that caused flooding, hence the decision to start from the top and work down.

Originally comprising of two bedrooms and a bathroom, the adjoining wall on the second floor was knocked through to create a spacious master bedroom with ensuite bathroom. The couple wanted a feeling of indulgence in these rooms, as Tim elaborates: "We've travelled a lot and we've stayed in some fabulous hotels so we thought we'd bring the concept of having the sort of luxury back to our own home." This has been beautifully achieved with the use of quality materials and opulent finishes, such as the rich, warm walnut of the skirting boards and grand full-height doors that reach first floor to ceiling.

The two spaces are separated by a cleverly designed pocket sliding door that offers the option of closing off the bathroom, but when pulled back, disappears inside the wall for a more open-plan feel – a device that has been utilised throughout the property to optimise space. Fowler & Company was behind all the bespoke joinery. "Ben (Fowler) is great," enthuses Tim. "You can give him a brief and he'll come back with something fantastic. I love the doors; I really think they make a difference to the house."

The walls are covered in chic petrol-blue linen fabric, on paper from William Yeoward, adding another dimension to the room's sense of decadence. The same blue colour features in the sunspacio coordinating curtain fabric, again by William Yeoward. Glossy yet understated Poliform furniture in shades of mocha complement and complete this tasteful scheme.

