



**Residential Style** explores the trends talented designers are adopting in shaping residential interiors around the world. It follows on from the success of IMAGES' Informative Residential Spaces series of books.



Full height cupboards highlight the features of the original building while concealing storage, audio-visual equipment and a fireplace.  
 2012/13, London, UK  
 William Tozer Architecture & Design  
 Photography: Graham Miller from Architecture & Design  
 88 pages, 40 images (11)

A design of wood defines the open-plan space into dining and living zones.  
 2012/13, London, UK  
 William Tozer Architecture & Design  
 Photography: Graham Miller from Architecture & Design  
 88 pages, 40 images (12)



This left-side bedroom is accommodated in a half extension, which preserves the original character of a three-bedroom or living house. An all-white scheme allows glass the benefit of a large space.  
 2012/13, London, UK  
 William Tozer Architecture & Design  
 Photography: Graham Miller from Architecture & Design  
 88 pages, 40 images (16)



Three kitchen units are white, incorporate brass with Corian countertop and are integrated into a space that includes a utility room and bath.  
 2012/13, London, UK  
 William Tozer Architecture & Design  
 Photography: Graham Miller from Architecture & Design  
 88 pages, 40 images (18)

This kitchen and dining area are extensions of the outdoor deck area and there is large sunlight streaming in.  
 2012/13, London, UK  
 William Tozer Architecture & Design  
 Photography: Graham Miller from Architecture & Design  
 88 pages, 40 images (19)

White walls and oak wood panel blend perfectly to make the kitchen and a truly pleasant room.  
 2012/13, London, UK  
 William Tozer Architecture & Design  
 Photography: Graham Miller from Architecture & Design  
 88 pages, 40 images (20)

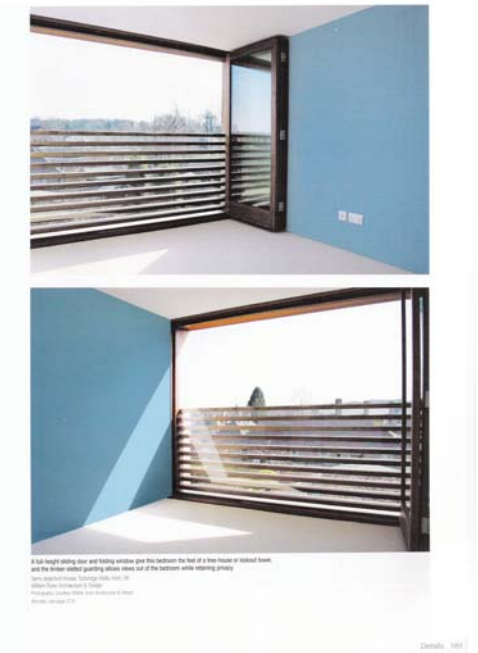


The clean lines and fresh colours of a bathroom that forms part of the extension of a detached Victorian house.  
 2012/13, London, UK  
 William Tozer Architecture & Design  
 Photography: Graham Miller from Architecture & Design  
 88 pages, 40 images (21)

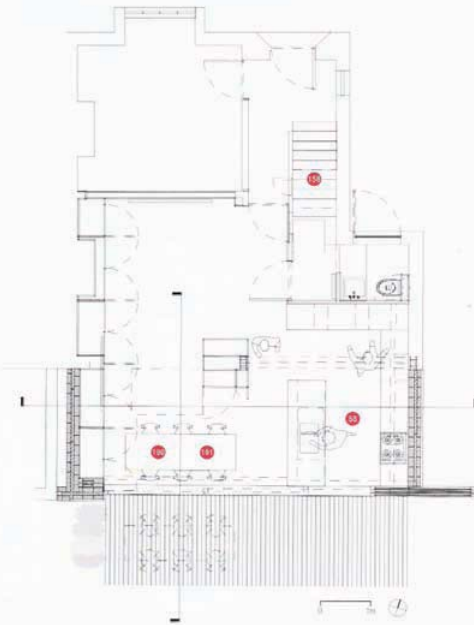


**WILLIAM TOZER**  
 architecture & design

ARB architect RIBA chartered  
 first floor 33 d'arlay street london w1f 8eu  
 t +44 (0)20 7734 6055 f +44 (0)20 7437 7775  
 enquiries@wtad.co.uk www.wtad.co.uk



A full height sliding door and balcony window give this bedroom the feel of a three-bedroom or linked house, and the brilliant white-painted exterior allows views out of the bedroom while retaining privacy.  
 2012/13, London, UK  
 William Tozer Architecture & Design  
 Photography: Graham Miller from Architecture & Design  
 88 pages, 40 images (22)



A large rear extension fuses this semi-detached house with the adjacent garden and reconfigures the adjoining spaces  
 Semi Detached House, Sandridge (Herts), Kent, UK  
 William Tozer Architecture & Design  
 Photography: Courtney William Tozer Architecture & Design



0120 7734 6055  
 www.williamtozer.co.uk  
 0120 7437 7775  
 enquiries@wtad.co.uk



0120 7734 6055  
 www.williamtozer.co.uk  
 0120 7437 7775  
 enquiries@wtad.co.uk



0120 7734 6055  
 www.williamtozer.co.uk  
 0120 7437 7775  
 enquiries@wtad.co.uk



A continuous floor level from inside to outside gives this dining space an outdoor quality and the courtyard the character of a room  
 Semi Detached House, Sandridge (Herts), Kent, UK  
 William Tozer Architecture & Design  
 Photography: Courtney William Tozer Architecture & Design  
 For plan, see page 214



This floor is finished in power-floated concrete to capture the open-ended feel of a building in progress  
 Sandridge, London, UK  
 William Tozer Architecture & Design  
 Photography: Courtney William Tozer Architecture & Design  
 For plan, see page 214



0120 7734 6055  
 www.williamtozer.co.uk  
 0120 7437 7775  
 enquiries@wtad.co.uk

0120 7734 6055  
 www.williamtozer.co.uk  
 0120 7437 7775  
 enquiries@wtad.co.uk



0120 7734 6055  
 www.williamtozer.co.uk  
 0120 7437 7775  
 enquiries@wtad.co.uk

WILLIAM TOZER  
 architecture & design

ARB architect RIBA chartered  
 first floor 33 d'arblay street london w1f 8eu  
 t +44 (0)20 7734 6055 f +44 (0)20 7437 7775  
 enquiries@wtad.co.uk www.wtad.co.uk