

# OPEN Kitchens

## Contents

Introduction	6	Jonathan Clark Architects
HIGHGATE HOUSE	8	Safdie Rabines Architects
LOMAC RESIDENCE (TREE HOUSE)	14	Andy Macdonald/Mao Interactive
VIEW STREET HOUSE	19	Moses Beck Studio
HIDDEN STREET LOFT	23	Georg Olsson/Olsson Architects
SOLAR TUBE	26	Ramon Pirez
HOUSE IN CABRERA	30	Scop Architects
CHEWICK PENTHOUSE APARTMENT	34	Winka Dudzicki/Arctic Institute
GREENWICH 497/498 APARTMENT	40	McDowell & Benedetti
LOFT IN DE HAVILLAND STUDIOS	44	Gus Westerman
5 SCULPTURES	48	Burns Research Design Architects
DOWNING RESIDENCE	52	Hecker, Pletzer & Gutzke
APARTMENT IN MELBOURNE	56	Bernd Collinger
KAUFMANN HOUSE	60	John Henry Design
REBEY BELLET'S HOUSE	64	Oswald Sadek
BONDI JUNCTION RESIDENCE	68	Chu & Siroshofer Architecture + Design
ASTOR PLACE PENTHOUSE LOFT	72	Chi Shiao Architecture
PEKARSKY APARTMENT	76	Pearmut Architects
LOFT HQ	80	François Bell
CALVEY HOUSE	84	William Tozer
<b>SEMI-DETACHED TUNBRIDGE WELLS</b>	<b>90</b>	<b>David Lane</b>
RESIDENCE IN COOLINGWOOD	94	Robert Gradski Architects
CASTAN HOUSE	100	Greg Gong
KOOWONG ROAD HOUSE	104	Pearmut Architects
HOUSE IN THE SOUTH OF BERLIN	110	Thijs Aaldering/Architectuur Centrale
VILLA DE JONG	114	Gus Westerman
LOFT IN MILAN	122	Carlo Colombo
WEST MELBOURNE HOUSE	126	Greg Gong
BEACH HOUSE IN MILAN	130	Isabella Grassmeyer
MÖHR'S HOUSE	136	Philippe Staub Architects
LOFT BEVERLY HILLS	142	Pearmut Architects
830 HOUSE	146	BO & Architects/burton
MALVERN HOUSE	150	Greg Gong
N GUESTHOUSE	154	Takao Shirotsuka Atelier
GEORGIAN TERRACE	158	FZ Architects
NO-HO LOFT	162	Stoke Architects
OPEN END	166	William Tozer
VAN BHEESIRAJI	170	Marc Probst Architects, John Pawan
PIRK HOUSE	174	Filipp Bortolero
RESIDENCE IN VIENNA	178	Ulrich Schachner, Jyo Dokuishi
FLATIRON LOFT	182	Stoke Architects
Directory	189	



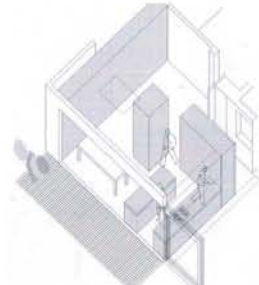
dissolving the boundaries between inside and outside.

This unique kitchen is the result of an extension to an old English Victorian house. In the course of its construction, the architect created the kitchen in the true sense of the word. The dining and cooking area can be opened directly from the outside by sliding doors, conveying a sense of freedom and complete openness and providing a new access to the garden. The space

access to the outside area dissolving the boundaries between inside and outside. Additionally, daylight can penetrate from above. The actual cooking area consists of a kitchen island and an additional kitchen range on the outside wall providing space for further storage. The kitchen island serves as a worktop and contains the sink. The dining area is located directly behind it and may also be shifted to the terrace.

## SEMI-DETACHED TUNBRIDGE WELLS

Architect: William Tozer Photos: Jaded by William T



Perimeter

181



Section

182



When dining or cooking in this kitchen designed by architect William Tozer, the owners and their visitors can get a real outdoor feeling. The new units, equipped with glazed sliding doors and completely open to the terrace and garden.

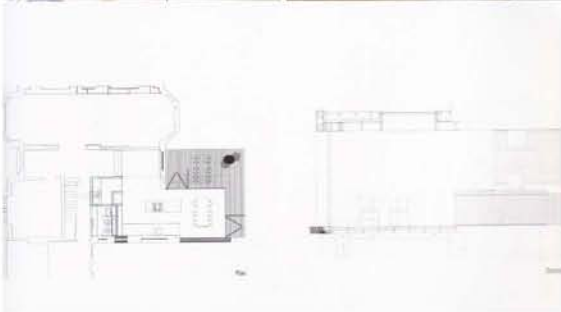
The existing area only consists of two parts, an inconspicuous kitchen unit and a simple kitchen island. From all sides you can enjoy the magnificent view and the open atmosphere. Even from above, light and air may pour

into the area and increase the sense of freedom and infinity. Behind the coping area and the cornice, there is enough space for the large dining table that can easily be placed on the terrace as required.

All in all, the prevailing character of white and light colours creates a nice and pure atmosphere contrasting with natural light. However, the light wooden floor blending into the garden terrace floor creates a certain connection to the outside area and enhances the airy atmosphere of the place.

## OPEN END

Architect: William Tozer. Photos: created by William Tozer



### Moneo Brock Studio

C/ Francisco de Asís  
Mendez Caceresq. 7, bjs.  
28002 Madrid, Spain  
P: +34 915 638 056  
F: +34 915 638 573  
contact@moneobrock.com  
www.moneobrock.com  
Hudson Street Loft

### Peanutz Architekten

Sika Kreis 8, Weißing Erntedach  
Schlesische Str., 12, 2. Hof, Fabrik, 4. OG  
10967 Berlin, Germany  
P: +49 3044 378033  
F: +49 3044 378010  
post@peanutz-architekten.de  
www.peanutz-architekten.de  
House in the south of Berlin  
Loft Beverly Hills  
Loft Rio

### Philippe Stuebel Architekten

Hardtstrasse, 219  
CH-8005 Zurich, Switzerland  
P: +41 44 440 7777  
F: +41 44 440 7779  
contact@philippstuebel.ch  
www.philippstuebel.ch  
Möhr's House

### Ramon Pintó

Av. Pau Casals, 7, s/a 2  
08021 Barcelona, Spain  
P: +34 934 141 061  
F: +34 934 141 061  
ramonpinto@casac.es  
House in Cabres

### Robert Grodski Architects

127 Wellington St.  
Prahran, VIC 3181, Australia  
P: +61 3 9525 2655  
F: +61 3 9529 5252  
grodskiarchitects@bigpond.com  
Castan House

### Salfie Rabines Architects

1101 Washington Place  
San Diego, CA 92103, USA  
P: +1 619 297 6153  
F: +1 619 299 6072  
taal@salfierabines.com  
ricardo@salfierabines.com  
www.salfierabines.com  
Lomac Residence (Tree House)

### Scaps Architects

Unit 2 Providence Yard  
Esna Street  
London E2 7RJ, UK  
P: +44 207 012 1244  
F: +44 207 012 1255  
mail@scaps-architects.com  
www.scaps-architects.com  
Chiswick Penthouse Apartment

### Slade Architects

150 Broadway, 807  
New York, NY 10038, USA  
P: +1 212 677 8380  
F: +1 212 677 8330  
info@sladearch.com  
www.sladearch.com  
Flatiron Loft  
No-No Loft

### Takao Shiotsuka Atelier

301-4-1-24, Miyako-machi  
Ohta-shi, 670-0034 Ota, Japan  
P: +81 97 538 8629  
F: +81 97 538 8629  
shio-atf@shio-atf.com  
www.shio-atf.com  
N Guesthouse

### Thijs Asselbergs/Architectuur

Centrale  
Postbus 3056  
2001 DB Haarlem, The Netherlands  
P: +31 23 534 8109  
F: +31 23 531 1210  
info@architectuurcentrale.nl  
www.architectuurcentrale.nl  
Villa de Jong

### William Tozer

1st floor, 33 D'Aubay Street  
London W1F 6EU, UK  
P: +44 207 734 6055  
F: +44 207 437 7775  
william.tozer@wtad.co.uk  
www.wtad.co.uk  
Open End  
Semi-Detached Tunbridge Wells

### Winka Duddeldam/Archi-tect

200 Varick St. 507B  
New York, NY 10014, USA  
P/F: +1 212 200 0920  
wd@archi-tectonica.com  
www.archi-tectonica.com  
Greenwich 497/66 Apartment