

TERENCE CONRAN

HOW TO LIVE IN SMALL SPACES

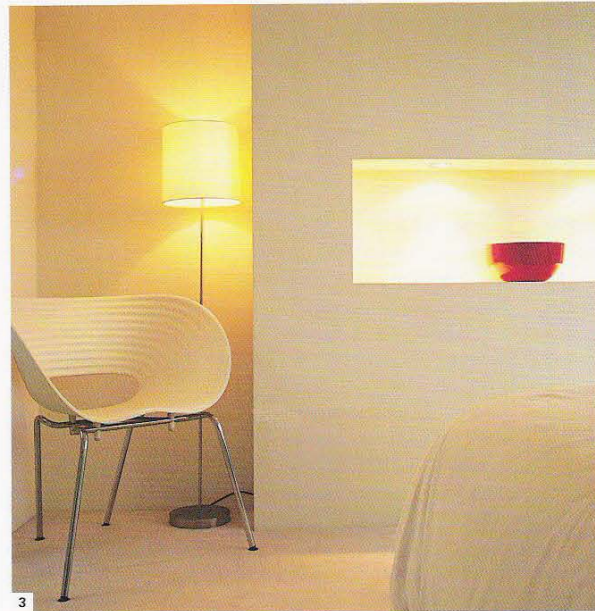
Lighting

2:6

Architectural lighting

Strip lights that are concealed beneath kitchen wall units, under cornicing or plinths, or behind baffles have the effect of highlighting architectural detail or minimizing the bulk of built-in features and fittings. Floor-level spots, defining pathways, or set into stairs or skirting boards (baseboards), add interest and definition to a lighting scheme.

3_A contemporary standard lamp and a lit recess create diffused background lighting.



Bathrooms

3:4

Wet rooms

An emerging trend in bathroom design is the wet room, a fully waterproofed area where the shower drains directly to the floor. Converting a bathroom into a wet room makes good sense if the space is small, awkwardly shaped, or both. Because fittings are generally restricted to a sink and toilet and the shower is not enclosed by a cubicle or, indeed, screened in any way, floor area is maximized. When space is tight, it is difficult to prevent spray from a power shower from wetting everything within range; a fully waterproofed wet room sidesteps the problem altogether. Bathtubs can be sited within wet rooms if space permits.



1_A narrow wet room clad in tilework features a glazed panel at the rear that makes the space feel less enclosed.

"...makes the space feel less enclosed"